



A snapshot of the key messages contained in the draft

CLIMATE CHANGE ADAPTATION PLAN

for the
Adelaide Hills, Fleurieu Peninsula and Kangaroo Island Region

27 June 2016

The Regional Climate Change Adaptation Plan provides the foundation for a coordinated and collaborative response to climate change impacts and identifies priorities for adaptation across the region.

Global climate change is already occurring, with the impacts being experienced world-wide. Although global mitigation action is critical, we are already on a pathway that necessitates substantial adaptation action. By being proactive and thinking and planning now for the impacts that are already happening and also those that are likely to occur as the climate changes, the RH&C region can position itself to manage adverse impacts and take advantage of any opportunities.

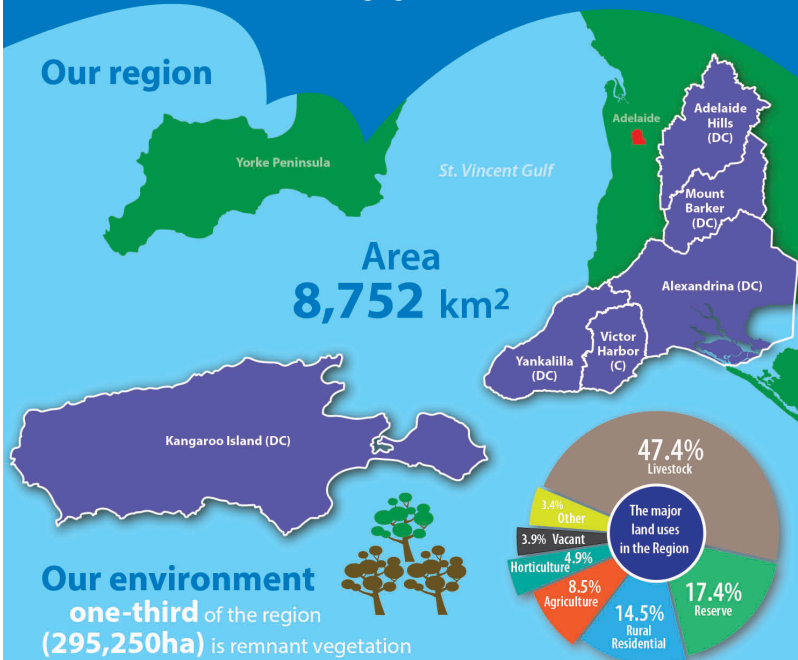
We want to make sure that the region remains a strong and vibrant place to live, work and visit and that businesses, communities and environments can respond positively to the challenges and opportunities presented by a changing climate.

Resilient Hills & Coasts...

is a collaborative project formed to develop a regional climate change Adaptation Plan for the Adelaide Hills, Fleurieu Peninsula and Kangaroo Island region of South Australia.

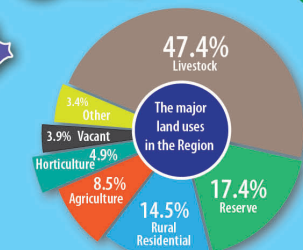
Resilient Hills & Coasts aims to strengthen the resilience of our communities, economies and the natural environment to respond and adapt to the changing climate.

Our region

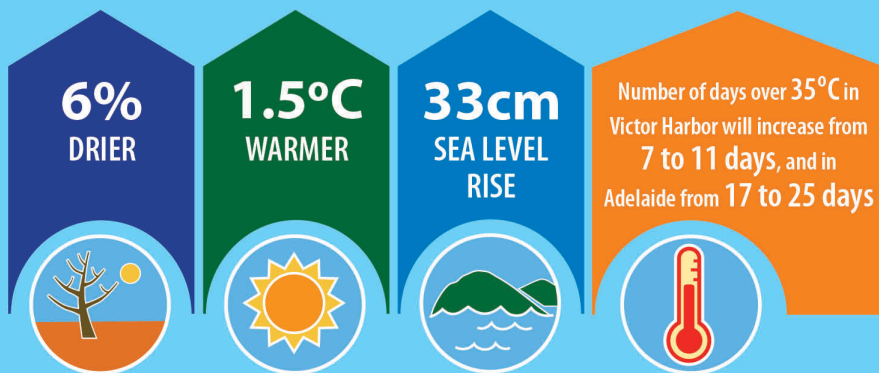


Our environment

one-third of the region (295,250ha) is remnant vegetation



Our changing climate ...by 2070



... by 2090

The climate of Victor Harbor is projected to be similar to the current climate of Adelaide and Keith, and Kingscote is projected to be similar to Nhill in the Wimmera region of Victoria. In both examples, warmer and drier conditions will be experienced with a projected increase in average annual temperature of 1.3 - 2.0°C and a reduction in average annual rainfall of between 35 - 60mm.

(2090, RCP4.5 - Climate Change in Australia projections)

These projections and the draft adaptation plan are based on an intermediate emissions scenario (RCP4.5). It is acknowledged that the world is currently tracking on a high emissions scenario and future planning and action may need to respond and accelerate accordingly.



Proudly supported by the Department of Environment, Water and Natural Resources, SA Fire & Emergency Services Commission, Adelaide and Mount Lofty Ranges Natural Resources Management Board and Kangaroo Island Natural Resources Management Board.



A snapshot of the key messages contained in the draft

CLIMATE CHANGE ADAPTATION PLAN

Key regional themes for adaptation planning

Adelaide Hills & Fleurieu Peninsula

- agriculture
- climate-ready homes & buildings
- coastal ecosystems
- community facilities & open space
- emergency services management
- infrastructure assets
- natural landscapes
- public coastal assets
- vulnerable members of the community
- water-dependent ecosystems

Kangaroo Island

- agricultural productivity
- built coastal assets
- condition of sealed & unsealed roads
- essential services & infrastructure
- vulnerable members of the community
- protecting against bushfire threat
- wild-catch fisheries productivity
- biosecurity
- terrestrial ecosystems
- aquatic ecosystems

Regional adaptation priorities

Support adaptive management of protected areas on public lands with a focus on managing fuel loads.

Develop climate-ready guidelines for public realm and streetscape management that among other things will recommend appropriate material and tree species selection, shade coverings, inclusion of water sensitive urban design features, and opportunities for misting infrastructure.

Diversify agricultural activities and encourage the use of different varieties and types of crops and pasture, and livestock and livestock management practices, from warmer and drier parts of the state.

Advocate and facilitate the use of more energy efficient inputs for housing through government incentives and advocacy for the use of appropriate methods and materials, and working with the development industry and research institutes.

Incorporate design allowances for increases in extreme events by ensuring that new and renewed infrastructure is designed to allow for increases in extreme events.

Improve management of native vegetation on private properties by supporting landholders managing native vegetation on private properties, potentially through the use of well-funded incentives.

Restrict development in hazard prone areas, such as areas at risk from sea level rise along the coast, bushfires inland, and infrastructure and dwellings at risk from flooding following intense rainfall events.

Support water quality improvement measures, especially in relation to stormwater.

Water quantity is an overarching priority for the region, and is considered across multiple themes and sectors.

The ongoing provision of information about climate impacts and adaptation responses is vital to achieving lasting, effective outcomes. Equally, careful monitoring and evaluation is required across the affected sectors to quantify the impacts and identify appropriate triggers for the implementation of certain adaptation strategies.

Project partners have committed to implementing the plan...

Successfully implementing this plan will require:

- maintaining momentum as the project transitions from planning to implementation
- localising action, to take up implementation with individual project partners
- responsive project management and governance reflecting on the learnings from the project to date
- strengthening engagement and partnerships between project partners but also with community, industry, business, education & government sectors
- a flexible approach, allowing the region to respond to new information that emerges about the rate and magnitude of climate change

WE INVITE YOU TO PARTICIPATE. Have your say on the draft plan, or find out more about the project at www.alexandrina.sa.gov.au/resilienthillscoasts