

Annual Report

2017



The Hon Fiona Nash

Minister for Regional Development
Minister for Local Government & Territories
Minister for Regional Communications

Hon. Jay Wilson Weatherill

Premier

Hon. Geoff Brock

Minister for Regional Development
Minister for Local Government

Hon. John Rau

Deputy Premier
Attorney-General
Minister for Justice Reform
Minister for Planning
Minister for Industrial Relations
Minister for Child Protection Reform
Minister for the Public Sector
Minister for Consumer and Business Services
Minister for the City of Adelaide

Hon. Susan Close

Minister for Education and Child Development
Minister for Higher Education and Skills

Hon. Kyam Maher

Minister for Employment
Minister for Aboriginal Affairs and Reconciliation
Minister for Manufacturing and Innovation
Minister for Automotive Transformation
Minister for Science and Information Technology

Hon. Leon Bignell

Minister for Agriculture, Food and Fisheries
Minister for Forests
Minister for Tourism
Minister for Recreation and Sport
Minister for Racing

Hon. Tom Koutsantonis

Treasurer
Minister for Finance
Minister for State Development
Minister for Mineral Resources and Energy

Hon. Ian Hunter

Minister for Sustainability, Environment & Conservation
Minister for Water and the River Murray
Minister for Climate Change

Hon. Peter Malinauskas

Minister for Police
Minister for Correctional Services
Minister for Emergency Services
Minister for Road Safety

Hon. Zoe Bettison

Minister for Communities and Social Inclusion
Minister for Social Housing
Minister for the Status of Women
Minister for Ageing
Minister for Multicultural Affairs
Minister for Youth
Minister for Volunteers

Hon. Stephen Mullighan

Minister for Transport and Infrastructure
Minister for Housing and Urban Development

Table of Contents

Chair's Report.....	2
Chief Executive Officer Report.....	3
Role of RDA.....	4
Regional Profile.....	5
Highlights	8
Projects.....	10
Regional Priorities.....	14
Audited Financials.....	16
Board Members.....	21
Organisational Chart.....	22
Publications.....	23





Chair Report

Living and working in one of the most beautiful parts of Australia has reinforced in me the importance of striving to maintain and indeed enhance the quality of life that we hold dear. Our RDA region is extraordinarily diverse. It ranges from the lush Adelaide Hills with its wineries and picturesque valleys and Mount Barker at its centre; one of the fastest growing communities in Australia. To the Fleurieu Peninsula capturing McLaren Vale and Langhorne Creek, two of Australia's premium wine districts and the beautiful beach resorts along the coast. And of course the pristine environment of Kangaroo Island that makes up our community. Clearly there are challenges in bringing these communities together as well as recognising their distinct characters and requirements.

We have established an organisation that is well grounded in the community. Our board is made up of industry and community stakeholders. Our staff is led by executives with wide commercial expertise gained in Australia and overseas. They are supported by project managers and support staff that ensure we have a very effective team.

The federal government conducted a review into the effectiveness of RDAs across Australia. In my view RDAs in South Australia performed well. Our model of having the support of all levels of government holds us in good stead. We are unique in this level of cooperation; none of the other states can match us. It is easy to understand the difficulty in having a single structural policy catering for so many different organisational models.

The new Charter proposed by the government closely mirrors the work we do. Most of our focus is on economic development including investment attraction. Since we, along with the Premier, signed an agreement in China to establish a commercial arrangement with an arm of the Shanghai Municipal Government to attract foreign investment we have made great strides. Earlier this year we led a small delegation that has resulted in advance discussions relating to multi-million dollar investments in horticulture, wineries and waste management. We have made over a dozen trips to China in various capacities, but all aimed at improving the economic well-being of our region.

The RDA has worked with the federal government to champion the case for new infrastructure. We believe that infrastructure is essential for economic development, improvements in productivity and employment. We have championed developments right across our region and I am delighted at some of these achievements that include airport upgrades, a new swimming pool, new sports fields and arenas freeway junctions and much more.

We have embraced new technology, establishing an Electric Highway, linking the use of electric cars and tourist hubs. We have been in discussions with Local Motors in the US trying to establish a trial in our region for autonomous vehicles. We deliver programs aimed at finding jobs for our youth and we work to help small businesses take advantage of new technologies.

I appreciate the support of deputy chair Carol Schofield and of all the board members. Their guidance to the organisation and commitment to the region is appreciated. And of course, the staff who develop policies, implement programs and run the show with efficiency and charm is appreciated.

Ann Ferguson OAM



Chief Executive Officer Report

The 2016/17 year was the second year of our funding agreement with Regions SA and the South Australian Government.

During 2016/17, we continued to deliver on the five key projects and formally launched the electric vehicle highway, a network of charge points across the region.

The Federal Government undertook a comprehensive review of the RDA network and findings will be delivered during in 2017/18.

RDA AH, F & KI have continued to work with Councils and businesses in the region to develop investment proposals for infrastructure projects. These proposals are being used to attract investment into the region now and in coming years. We expanded our targeted markets to include Singapore and Malaysia and lead an out bound delegation into these countries. We also hosted several inbound delegations from Shanghai to meet with businesses and Councils. We have strong outcomes with several businesses now negotiating with prospective overseas partners.

We have been working with Federal and State Governments and the LGA to implement a boundary adjustment to include the heritage preservation region of Onkaparinga Council into our region. I am pleased to say that this has been approved and our expanded region takes effect from the commencement of 2017/18.

As a grantee under the Skills for Jobs in Regions program we worked hard to deliver what where extremely challenging outcomes for 2016/17. We will continue to work with the Department of State Development to run these programs over 2017/18. The year by year contracting of these programs continues to be a challenge for us and provides little continuity and certainty.

Our peak body in South Australia, Regional Development South Australia, worked with the seven SA RDA's to update our infrastructure prioritisation document. This was last done four years ago and I many of the projects listed on the old document have been delivered. This includes the Bald Hills Interchange and Kangaroo Island Airport upgrade. We hope to have the updated document completed in 2017.

I am excited about the future for this RDA and I look forward to the outcomes we can deliver over 2017/18. The Federal Government review outcomes may see a change in direction for RDA's into the future but we will continue to work with all of funding partners so that together, we can deliver strong and sustainable positive economic growth for our region.

I would like to thank the staff and the Board for their commitment and efforts over 2016/17 and I look forward to their continued support into 2017/18.

Damien Cooke

Role of RDA

Who are we?

Regional Development Australia Adelaide Hills, Fleurieu & Kangaroo Island (RDA) is a partnership between the Australian, state and territory and local governments to support the growth and development of Australia's regions.

The RDA Adelaide Hills, Fleurieu & Kangaroo Island Committee consists of 8 representatives from the region plus two Federal representatives.

The RDA maintains its close working relationship with the four board office holders and the executive. Activities for these roles include:

- The Chair continuing to work at establishing and enhancing relationships with China not just for this RDA region but inclusive of other regions.
- The deputy chair leading issues relating to agriculture development
- The Treasurer, who is a council CEO acting as a conduit for discussions and actions with local councils.
- The Secretary engaged in ensuring that governance principles are adhered to.

What we do?

RDA Adelaide Hills, Fleurieu & Kangaroo Island's committee members aim to build partnerships between governments, regional development organisations, local businesses, community groups and key regional stakeholders to provide strategic and targeted responses to economic, environmental and social issues affecting the region.

Our Vision

The Vision for the Adelaide Hills Fleurieu and Kangaroo Island region is for an economically prosperous region made up of resilient local communities, providing homes and jobs for healthy, engaged populations who are well connected to each other, to services and to social and economic opportunities.

Our Mission

To assist in securing a strong and sustainable economic, social and environmental future for the region by:

1. improving community economic development
2. enhancing community engagement and consultation
3. informing regional planning
4. enhancing a whole of Government approach and
5. enhancing an awareness of Government programs

Regional Profile

1. Population growth

- large and fast growing regional population in the mainland part of the region, driven by the 30 year Plan for Greater Adelaide
- population growth mainly fed by inbound migration particularly from the Adelaide Metropolitan Area
- high population of growing proportion of older people
- southern coastal townships and Kangaroo Island have high proportion of absent ratepayers
- Adelaide Hills has easy access to Adelaide Metropolitan Area, high levels of commuting to work and water catchment policy leading to a lack of development opportunity

2. Health and well being

- reasonably healthy and affluent regional population particularly in more accessible (wellconnected) areas of the region

3. Access

- reasonably well connected
 - o between larger population centres within the region
 - o between the region and the Adelaide Metropolitan Area
 - o between the region and major markets to the east including the Murraylands and the eastern states
- Kangaroo Island is poorly connected to and from the mainland parts of the region





4. Skills

- relatively highly qualified workforce
- significant concentration of higher qualified population in Adelaide Hills

5. Regional Jobs

- relatively large labour force but a relatively small regional jobs base as a proportion of the labour force
- steeply rising unemployment against the state average masked by very low unemployment rate in the Adelaide Hills

6. Economic development

- relatively diverse economy with the exception of Kangaroo Island
- key wealth generating industries are agriculture, forestry and fishing, tourism, mineral resources and manufacturing particularly in food and wine
- key service industries linked to population growth are health and community services, retail, building and construction and education and training
- business opportunities mainly in micro to small businesses
- stabilising business growth after a period of decline



**Regional
Development
Australia**

ADELAIDE HILLS
FLEURIEU &
KANGAROO ISLAND



7. Innovation

- foundation (core) number of innovative businesses particularly in the Adelaide Hills
- strong link between levels of business innovation and proximity to the Adelaide Metropolitan Area

8. Natural environment

- significant, valuable and unique natural assets supported by land management frameworks like
 - o National Parks, Conservation Parks and other conservation classifications
 - o water catchment policy
 - o World Heritage (application pending)
- particularly high proportion of land area under conservation on Kangaroo Island





Highlights

FLOURISHING ON THE FLEURIEU BUSINESS & COMMUNITY AWARDS 2016

The inaugural Flourishing on the Fleurieu Business and Community Awards is an initiative of Regional Development Australia Adelaide Hills Fleurieu and Kangaroo Island. The award aims to raise the awareness of the needs of and opportunities for older people's participation, engagement and interaction with both business and community ensuring an engaged, connected and participating older population for the benefit of both local businesses and the community as a whole.

Flourishing on the Fleurieu Age Friendly Business and Community Awards – These inaugural awards were presented at the Flourishing on the Fleurieu Festival at Signal Point in Goolwa on 19th October 2016. Overall twenty businesses received multiple nominations for these awards with a number of entries then submitted.

AWARD WINNERS WERE:

Age Friendly Home and Personal Services Awards

Home Instead Senior Care, Victor Harbor

Age Friendly Sport Recreation and Leisure including Tourism Award

Be Fit To Live, Victor Harbor

Individual Award – Best Customer Service

William E. Collins Jr from Be Fit to Live

Age Friendly Retail and Hospitality Award and Age Friendly Employer Award

Chat n Cino Café, Victor Harbor

Runner-up Age Friendly Retail and Hospitality

The Retro Vibe Café, Pt Elliot

These awards have brought to light some of our unique local businesses and individuals who work to provide quality customer services and products to meet the needs of the different age groups across our community.





ELECTRIC CAR LAUNCH

Mayor Ann Ferguson, Chair of the RDA, cut the ribbon to unveil the first Electric Highway in South Australia. At an event in Goolwa on Friday attended by more than forty enthusiasts tested the latest Tesla and Mitsubishi electric cars. Mayor Ferguson spoke that this new network *"banished the idea of range anxiety and provided the early adopters of new technologies to enjoy the delights of our region with ease"*.

Mayor Ann Ferguson went on to say *"It is now possible to travel from Adelaide, through the spectacular Adelaide Hills onto the glorious Fleurieu Peninsula and across to beautiful Kangaroo Island stopping at wineries, restaurants, beaches and other fabulous attractions without going near a service station"*.

We now have electric car stations scattered throughout the region catering for every type of vehicle. The Level 2 stations will enable most vehicles to top up with power whilst they are shopping, at lunch or picking strawberries, while the Level 3 fast chargers will take care of the supercars".

With the support of the state government and all of the councils in our region we have we have installed chargers in Mount Barker, Strathalbyn, Goolwa, Victor Harbor and Yankalilla linking to the established network on Kangaroo Island.

Electric vehicles has travelled the path of all new technologies as Gartner said matches expectations against maturity moving past the peak of inflated expectations through the trough of disillusionment towards the slope of enlightenment

Mayor Ferguson concluded by saying that *"We are delighted to be at the forefront where we can link the introduction of new environmentally sound technologies whilst showcasing the best our region has to offer"*.



INCLUSIVE TOURISM

With an estimated **4 million** people living in Australia with a form of disability, and 3.5 million aged over 65 years - **that means a lot of potential customers**, without even looking at international markets. The other consideration is that **these customers rarely travel alone**, bringing with them family, friends and colleagues. It's not all to benefit the customer though, it also creates confidence in your employees in welcoming a wide range of people, fostering customer service excellence and getting more people through your doors.

Regional Development Australia Adelaide Hills Fleurieu and Kangaroo Island is focusing on Inclusive Tourism as a regional business opportunity and is offering.



Regional
Development
Australia

ADELAIDE HILLS
FLEURIEU &
KANGAROO ISLAND

Projects



NORTHERN RAIL BYPASS

Description

The Adelaide Hills, Fleurieu and KI RDA along with the RDA of Murraylands & Riverland and several individual Councils from both regions have been revisiting an earlier report commissioned in 2010 into the feasibility of a northern freight bypass. That report concluded the capacity of the existing freight line would not be a factor until at least 2025 and a bypass was too costly. The report failed to properly take into account the rapid increase in population in the hills amongst other issues. In addition a key objective of the 2020 S&HLGA Regional Transport Plan is to strongly advocate on improved public transport within the region and is recommending a direct passenger rail from Mt Barker to Adelaide.

The AH,F & KI RDA has submitted an application into the LGA Research and Development Scheme for funding assistance of \$25,000 in a renewed scoping study into the bypass and a passenger rail service. S&HLGA was to be a partner in this review.

Progress

Tonkin Consulting is the successful tender for the scoping study and it is envisaged the final report will be available by mid next year.

ELECTRIC HIGHWAY

Description

Building on Kangaroo Island's work in developing an electronic car network we intend to link Adelaide to the region through a specialist activity that will be amongst the world's first region electric wide highway environmentally sustainable and innovative approach to tourists seeking a new experience.

Progress

We have successfully completed the introduction of the Electric Highway throughout Kangaroo Island, Adelaide Hills and the Fleurieu with a basic network of Level 2 chargers. We now intend to complete the grid by filling in the grid with both Level 2 and 3 charges. The particular areas which will be having focused include the Adelaide Hills and McLaren Vale.

INVESTMENT ATTRACTION PROJECT

Description

This project engages and welcomes investors to participate in the economic development of our region and in SA by continuing to assist in the development of these proposals and extending our reach in attracting potential investors.

Progress

Our investment attraction program included two trips to China and one to Singapore as well as supporting a number of inward missions.

As the result of the visits we are following up on joint venture in China in the horticultural industry bio ethanol plants to western China and international educational opportunities both here and China.

We also are exploring visiting India for future visits. To ensure we have the latest information we updated our Socio Economic Profile of the region including McLaren Vale.

TAPPING IN TO THE DEMOGRAPHIC DIVIDEND PROGRAM

Description

The increasing number of older Australian's moving to the Fleurieu has created an economic and social opportunity. This project aims to understand this dynamic within the Fleurieu region through research, consultation and value chain analysis to identify where the opportunities for economic growth and diversity lie.

Progress

Current activities include:

- VIBE Project (Valuing Individuals Background and Experience) Skill Volunteering project is having success in identifying skilled volunteers. A positive response has been received by potential volunteers to use their skills within volunteering roles. Difficulty has been encountered in getting community organisation to identify skilled roles. Southern Volunteering will now implement further education processes aimed at community groups about using skilled volunteers and changing attitudes. They are looking at implementing a newsletter with articles and reverse marketing of skilled volunteers to go out to their community organisation members.
- Inclusive Tourism Business Reviews – 12 reviews have been allocated with 7 completed. Fleurieu Peninsula Tourism has been approached to look at inclusive and accessible information for tourism operators across the Fleurieu on their website. The accommodation packaged under pinned by care support developed with McCracken, Home Instead Senior Care and Extra Aged Care is now fully live but some delay with further promotion has occurred due to a change in Manager at McCracken. Further promotion work will be undertaken in 2018 to promote the package for the next winter season.
- Social Eating Program Workshop for Providers occurred on the 18/10/17 with some valuable discussions and information collected. A report on the workshop was sent out to attendees on the 31st October. A second planned workshop was cancelled with low numbers but many wanting to still be involved. Further information will be distributed before Christmas.
- Seniors and Food – This project has now been scoped and is being delivered in partnership with PIRSA and KPMG. An industry workshop to discuss the barriers to entry for food manufacturers will be held end of January 2018 followed by four focus groups (2 metro and 2 in the Fleurieu). A Survey will then be designed and sent out to further collect details around what older people want and need in food. A Market segmentation report will then be produced and reported back to industry about May 2018.
- The RDA will work with Yankalilla Council supporting the development of their Age Friendly Strategy.



Regional
Development
Australia

ADELAIDE HILLS
FLEURIEU &
KANGAROO ISLAND

- Make it Intergenerational – Twenty older people aged 65 to 94 years were recruited for interviewing by 10 young people with the young film makers given the opportunity to undergo training in interview skills, lighting and camera work. Eight hours of filming was then edited into a twenty-three-minute film that portrays older people participating in the community, being actively involved and also their personal journeys and stories. The film challenges attitudes about older people and allows older people to be valued by sharing their stories. The film was launched at Zestfest on the 27th October and also shown as three short films at the Youth Extravaganza at Centenary Hall in Goolwa a week later. A future YouTube video is also planned.

YOUTH 2 WORK

Description

The 15-16 Youth2Work project was an initiative of Regional Development Australia Adelaide Hills, Fleurieu and Kangaroo Island (RDA) and supported by the Department of State Development through Skills for Jobs in Regions.

Progress

We have successfully completed the introduction of the Electric Highway throughout Kangaroo Island, Adelaide Hills and the Fleurieu with a basic network of Level 2 chargers. We now intend to complete the grid by filling in the grid with both Level 2 and 3 charges. The particular areas which will be having focused include the Adelaide Hills and McLaren Vale. Part of the process will be to work with tourist bodies to link electric cars to tourism visitor sites.

JOBS FIRST EMPLOYMENT PROGRAM (JFEP) - BROKERAGE PROGRAM

Description

The RDA has been engaged by Department of State Development to assist with brokerage of Jobs First Projects. The 'jobs first' approach enables the State Government to respond to job opportunities by funding employment, training and skills development projects that meet employer needs and provide real opportunities for unemployed people, to develop their skills and gain work.

Progress

This is the final quarter for the Broker program with funding to cease 31st December 2018. Projects developed by an industry engagement method was not successful with projects coming from leads through local government, networks and general conversations. This information has been fed back to DSD with suggestions that the program in its current form was no longer suitable and future broker activity should have leads based measures not industry engagement.

Over the past 12 months the Brokers have contacted many businesses across the region covering all our main industries. Many are not interested either due to their own labor hire practices, they provide their own training or they are small and micro businesses that either do not employ or employ in a very limited fashion. There is a lack of trust in government programs.

Childcare and SuperPlay Café Project

The project was delivered in June/July 2017 and has seen some good outcomes for people with multiple complex barriers to employment. Twelve participants were engaged into this project with the majority now working. Attendance rates were extremely good with many also turning up on days they weren't required.



Oceanic Victor

This project is in its final stages with the three training programs now complete for 45 participants. Some participants have commenced employment with Oceanic Victor with this anticipated to increase as Oceanic Victor increases its bookings and visitors to Granite Island for the summer. Participants were trained in both hospitality and Ship Board Safety to provide a flexible workforce and to provide maximum hours of employment for participants. This approach also provides other avenues of employment if they are unsuccessful with Oceanic Victor. Final employment outcomes will be known in January.

Hills HCO Workforce Development Project

An application for funding was submitted in early October and approved. HCO has commenced working with TAFESA on upskilling areas with the majority of the training to commence February 2018.

Community Living Australia (CLAust)

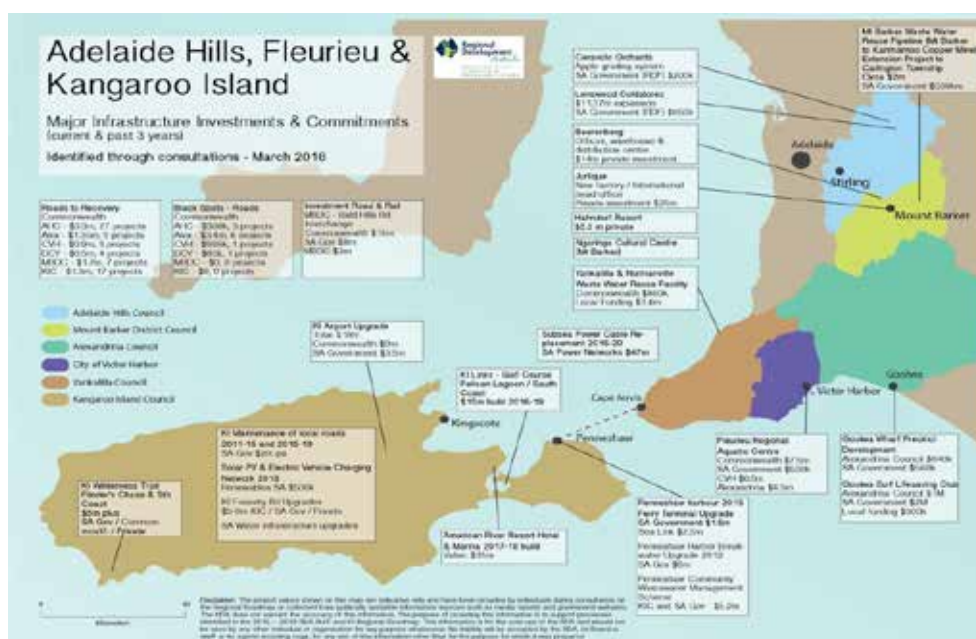
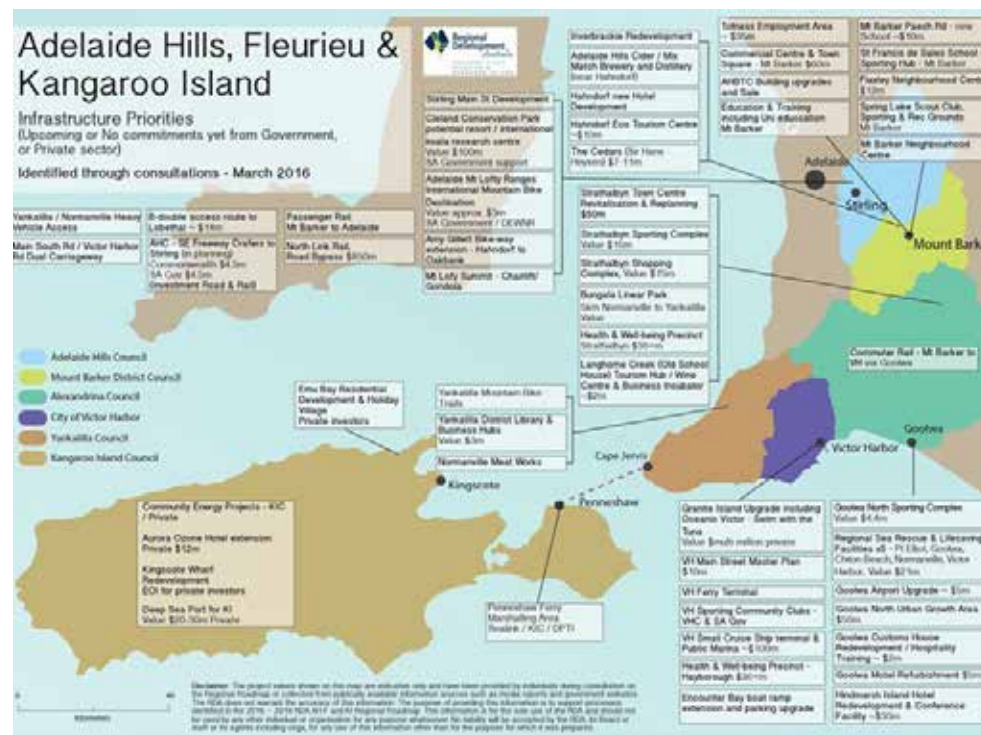
Has sought advice and assistance for a project for employment opportunities within their organisation for some of their clients with disabilities in areas like gardening and cleaning. Maxima will be the project partner or applicant to manage the project and the disability employment service provider. CLAust is currently not yet ready to further scope the project. The Broker role may end before a project application can be completed.

TAFESA has also requested the RDA Broker's assistance with the development of another project in the Fleurieu for the NDIS.



**Regional
Development**
Australia

ADELAIDE HILLS
FLEURIEU &
KANGAROO ISLAND



Audited Financials

Regional Development Australia Adelaide Hills, Fleurieu & Kangaroo Island Inc. Financial Report for the Year Ended 30 June 2017

BOARD'S REPORT

Your committee members submit the financial report of Regional Development Australia Adelaide Hills, Fleurieu & Kangaroo Island Inc. for the financial year ended 30 June 2017.

Board Members

The names of Board members throughout the year and at the date of this report are:

Ann Ferguson	Carol Schofield
Peter Dinning	Jan Loveday
Peter Clements	Victoria MacKirdy
James Walter	Gordon Key
James Sexton	Lorraine Rosenberg
Simon Rothwell	Peter Wadewitz

Principal Activities

The principal activities of the Incorporated Body during the financial year were to assist in securing a strong and sustainable economic, social and environmental future for the region by:

- Economic Development
- Community Engagement
- Regional Planning
- Whole Government Approach
- Government Programs

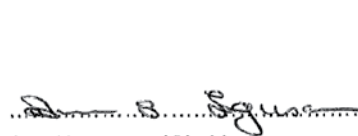
Significant Changes

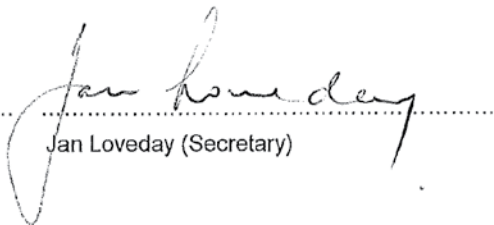
No significant change in the nature of these activities occurred during the year.

Operating Result

The operating surplus for the year amounted to \$148,987.

Signed in accordance with a resolution of the members of the Board.


Ann Ferguson (Chair)


Jan Loveday (Secretary)

Dated 6 of Nov -2017

STATEMENT BY MEMBERS OF THE BOARD

The Board has determined that the Association is not a reporting entity and that this special purpose financial report should be prepared in accordance with the accounting policies outlined in Note 1 to the financial statements.

In the opinion of the Board the Financial Report as set out on pages 1 to 6:

1. Presents a true and fair view of the financial position of Regional Development Australia Adelaide Hills, Fleurieu & Kangaroo Island Inc. as at 30 June 2017 and its performance for the year ended on that date.
2. At the date of this statement, there are reasonable grounds to believe that Regional Development Australia Adelaide Hills, Fleurieu & Kangaroo Island Inc. will be able to pay its debts as and when they fall due.

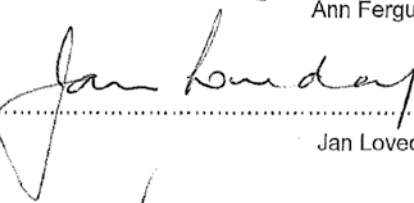
This statement is made in accordance with a resolution of the Board and is signed for and on behalf of the Board by:

Chair

..... 

Ann Ferguson

Secretary

..... 

Jan Loveday

Dated 6 of Nov 2017

**Regional Development Australia
Adelaide Hills, Fleurieu & Kangaroo Island Inc
Statement of Financial Position
As at 30 June 2017**

	Current Year Ended 30 June 2017 \$	Prior Year Ended 30 June 2016 \$
Current Assets		
Bank Cheque Account	193,952	64,398
Express Save Account	318,627	265,109
Term Deposit Account	125,014	122,208
VISA Account	(3,214)	0
Cash on Hand	76	300
	<u>634,454</u>	<u>452,015</u>
Accounts Receivable	370,082	342,744
Prepayments	9,933	10,175
Total Current Assets	<u>1,014,469</u>	<u>804,934</u>
Non Current Assets		
Office Furniture & Equipment	74,974	74,974
less: Accumulated Depreciation	<u>(65,611)</u>	<u>(63,142)</u>
	9,363	11,832
Motor Vehicles	81,224	100,267
less: Accumulated Depreciation	<u>(29,070)</u>	<u>(38,980)</u>
	52,154	61,287
Total Non Current Assets	<u>61,517</u>	<u>73,119</u>
Total Assets	<u>1,075,987</u>	<u>878,053</u>
Current Liabilities		
Creditors & Accrued Expenses	12,414	22,911
Funding Grants in Advance	113,762	355,803
Projects Unspent	293,421	30,717
Accrued Wages & Superannuation	28,239	20,797
Annual Leave Provision	68,400	58,044
Long Service Leave Provision	63,701	31,913
Tax Payable: GST	29,941	20,487
PAYG Withholding	11,802	12,240
	<u>621,680</u>	<u>552,912</u>
Motor Vehicles HP	51,323	45,067
less: Unexpired Charges Bank SA	<u>(428)</u>	<u>(343)</u>
	50,895	44,724
Total Current Liabilities	<u>672,575</u>	<u>597,636</u>
Non Current Liabilities		
Provision for Long Service Leave	16,864	42,856
Total Non Current Liabilities	<u>16,864</u>	<u>42,856</u>
Total Liabilities	<u>689,439</u>	<u>640,492</u>
Net Assets	<u>386,548</u>	<u>237,561</u>
Equity - Retained Earnings	<u>386,548</u>	<u>237,561</u>

**Regional Development Australia
Adelaide Hills, Fleurieu & Kangaroo Island Inc
Statement of Income & Expenditure
Financial Year Ended 30 June 2017**

	Current Year 2016-17	Prior Year 2015-16
	\$	\$
INCOME		
Core Funding - Government		
DITRDLC - Core Funding	218,433	218,433
Sub-total	<u>218,433</u>	<u>218,433</u>
Core Funds - Local Authority		
Alexandrina Council	53,300	52,000
City of Victor Harbor	33,900	33,100
District Council of Yankalilla	12,900	12,600
Kangaroo Island Council	7,500	37,800
Adelaide Hills Council	60,000	58,600
District Council Mount Barker	59,750	58,300
Onkaparinga Rural	23,500	0
Sub-total	<u>250,850</u>	<u>252,400</u>
Other Funding		
Skills for All Project Management Grant	0	21,824
Sub-total	<u>0</u>	<u>21,824</u>
Project Funding		
General Project Income	901,873	1,069,801
Sub-total	<u>901,873</u>	<u>1,069,801</u>
Other Income		
Bank Interest	6,422	9,349
Gain on Disposal of Assets	3,802	329
Miscellaneous	101,485	22,491
Project Expense Recoveries	223,932	223,255
Fleurieu Peninsula Tourism Expense Recoveries	1,358	4,146
Paid Parental Leave PPL Scheme	0	23,652
Sub-total	<u>337,000</u>	<u>283,222</u>
Total Income	<u>1,708,157</u>	<u>1,845,681</u>
EXPENDITURE		
Administration		
Advertising, Marketing & Promotion	380	8,011
Audit Fees	5,850	5,700
Bank Fees	893	1,043
HP Borrowing Fees	1,201	1,619
HP M/V Interest Paid	4,739	2,646
Cleaning & Hygiene	2,802	3,122
Consultancy Fees	1,091	1,120
Depreciation	33,483	33,367
Electricity	5,479	3,173
Information Technology	13,277	14,857
Insurance	11,188	12,137
Legal Fees	16,906	0
Meetings, Seminars, Workshops & Conferences	11,006	4,746
Membership & Subscriptions	3,935	11,245
Motor Vehicles	16,554	13,860
Office Equipment Rental & Maintenance	2,462	4,841
Office Supplies, Stationery & Printing	3,108	3,994
Postage & Freight	1,413	6,554
Rent & Rates	33,933	27,646
Repairs & Maintenance	1,645	1,297
Sponsorship	2,500	12,200

**Regional Development Australia
Adelaide Hills, Fleurieu & Kangaroo Island Inc
Statement of Income & Expenditure
Financial Year Ended 30 June 2017**

	Current Year 2016-17	Prior Year 2015-16
	\$	\$
Staff & Visitor Amenities	1,177	2,430
Storage (Archive)	3,647	3,243
Sundry	860	1,601
Telephones & Communications	13,712	13,188
Training & Staff Development	1,908	3,791
Travel & Accommodation	9,226	13,996
Sub-total	<u>204,373</u>	<u>211,429</u>
Employment		
Gross Wages (net of recoveries)	338,858	336,500
Fringe Benefits Tax	14,023	13,892
Superannuation (net of recoveries)	40,029	38,976
Payroll Tax	7,198	5,431
Annual leave Accrual	10,356	8,447
Long Service Leave Provision	5,796	6,372
Sub-total	<u>416,260</u>	<u>409,619</u>
Board		
Board Attendance Fees	16,100	17,384
Board Meeting & AGM Expenses	2,790	3,822
Board Travel & Conferences	1,059	9,436
Sub-total	<u>19,949</u>	<u>30,642</u>
Projects & Initiatives		
General Project Expenditure	901,873	1,069,801
RDA Strategic Planning	16,715	12,000
Sub-total	<u>918,588</u>	<u>1,081,801</u>
Total Expenditure	<u>1,559,170</u>	<u>1,733,491</u>
Surplus/Deficit for the Year	<u>148,987</u>	<u>112,190</u>
Retained Earnings at Beginning of Year	<u>237,561</u>	<u>125,371</u>
Retained Earnings at End of Year	<u>386,548</u>	<u>237,561</u>

Board Members

Ann Ferguson, Chair

Carol Schofield, Deputy Chair

Jan Loveday, Secretary

Victoria MacKirdy

James Sexton

Lorraine Rosenberg

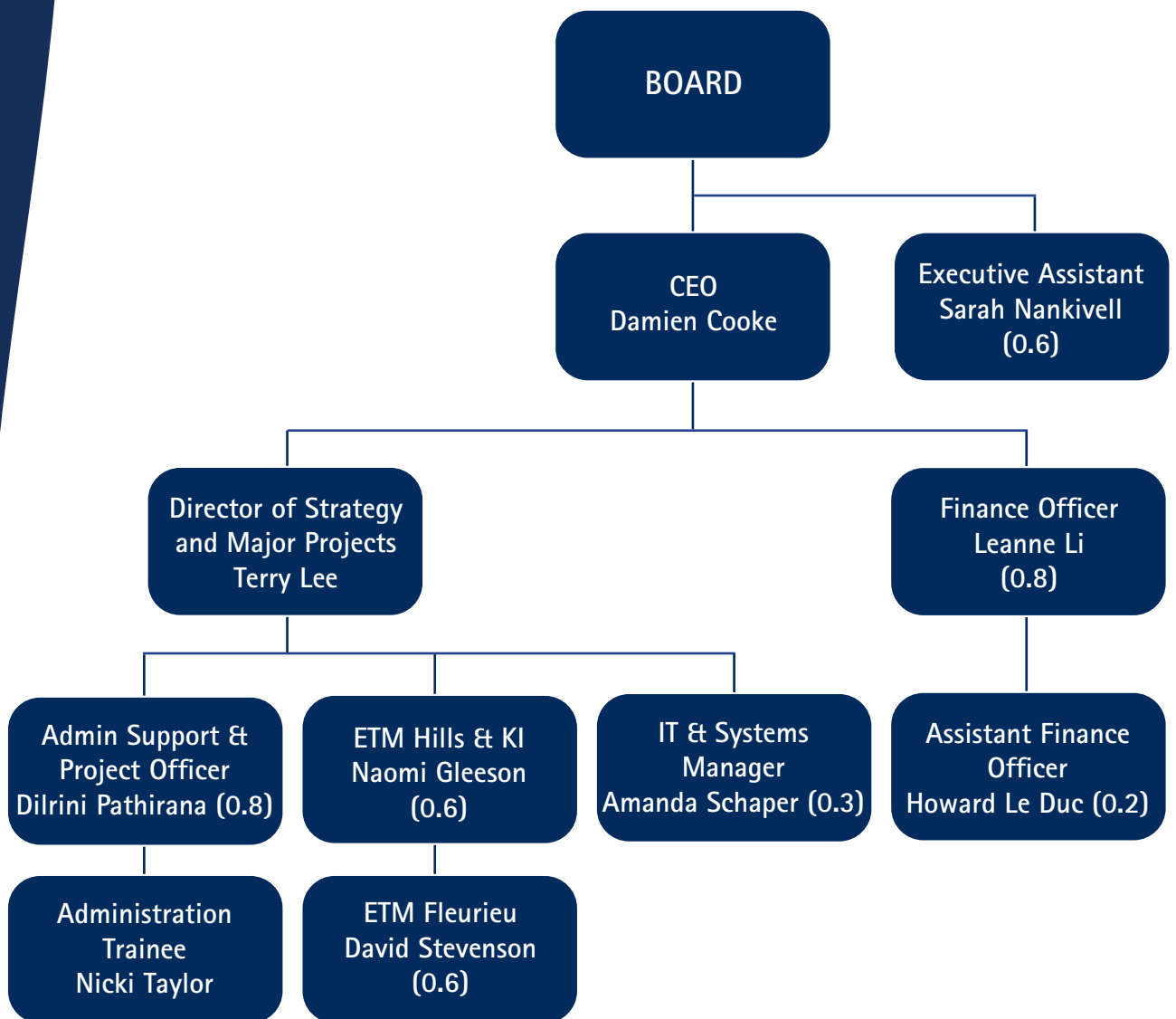
Simon Rothwell

Peter Wadewitz

James Walters



Organisational Chart



Publications

To view the below documents please visit our website <http://www.rdahc.com.au/documents.html>

Roadmap 2016-2019

Business Plan 2016-2017

Socio Economic Profile for the Region

Business Growth and Workforce Development Plan 2014-2017



THIS PAGE HAS BEEN INTENTIONALLY LEFT BLANK



**Regional
Development**
Australia

ADELAIDE HILLS
FLEURIEU &
KANGAROO ISLAND



*Our region is made up of
these council areas*

Adelaide Hills Council
District Council of Mount Barker
Alexandrina Council
City of Victor Harbor
Yankalilla District Council
Kangaroo Island Council

